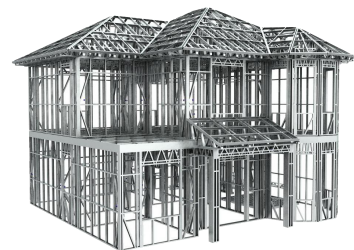
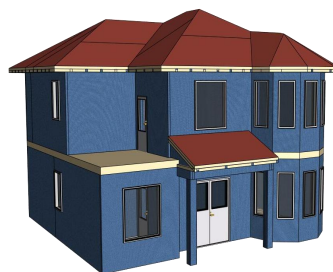




Jiangsu Huazhong Roll Forming Machine Co., Ltd  
Phone: 0086 13914110830  
Email: [huazhong@hz-lw.com](mailto:huazhong@hz-lw.com)  
[www.huazhong-lw.com](http://www.huazhong-lw.com)

## HUAZHONG LGS Steel Framing System

**Integrated Design to Production LGS Solution**



ADD: No.66, Jiaoyang East Road, Yangjian Industry park, Xishan District, Wuxi, jiangsu, china  
Tel:0510-85589687  
Fax:0510-85589686  
Mobile:0086-13914110830/008613914119628  
E-mail:[huazhong@hz-lw.com](mailto:huazhong@hz-lw.com)



Jiangsu Huazhong Roll Forming Machine Co., Ltd  
Phone: 0086 13914110830  
Email: [huazhong@hz-lw.com](mailto:huazhong@hz-lw.com)  
[www.huazhong-lw.com](http://www.huazhong-lw.com)

The benefits of the steel framing are as follows:

Steel framing utilizes cold roll formed steel members for walls, floors, and/or roofs.

The framing members are C-sections with standard dimensions.

- **Prevent corrosion**

Steel framing machine produce galvanized sheet steel or Al-Zn coated steel. The sheets are zinc coated(galvanized) or aluminum-zinc coated to prevent corrosion.

- **Uniform quality**

Manufacture of steel framing members adheres to strict tolerances, which results in consistent strength, straightness, and dimensionally stable members.

- **Design flexibility**

Steel framing provides excellent design flexibility due to the inherent strength of steel, which allows it to span longer than wood, and also resist wind and earthquake loads.

- **Recyclable**

All cold roll formed steel framing contains a minimum of 25% recycled steel.

The major environmental benefits of steel framing include: a 25% minimum recycled content and 100% recyclability; minimal job site waste due to standard quality.

- **Cost effective & save labor & easy to install**

Framing members can be ordered cut-to-length which can result in reduced on site labor costs and reduced on site waste. Framing weighs up to two-thirds less than conventional materials. Light weight steel framing lends itself to penalization techniques that can speed the on site construction process by allowing the assembly of walls in controlled environments. Steel framing members also have pre-punched holes that allow for easy installation of electrical wiring and plumbing.

- **Earthquake resistance & fire resistance**

Natural disasters, especially earthquakes, are unpredictable in terms of magnitude, frequency, duration, and location. Consequently, the ideal structure to withstand earthquake forces will behave in a consistent and predictable manner. Cold roll formed steel is capable of meeting this standard due to the strict process used to manufacture steel studs, inherent properties of steel and typical construction methods used in steel framing.

- **Improved construction quality**

The steel framing system is a modern method of rapid, quality construction using light gauge steel. The PROFORMER steel framing machines make all punching and fixing holes by accurate computer control. This allows frames or trusses to be manufactured with high precision and enable the frame to be self locating.



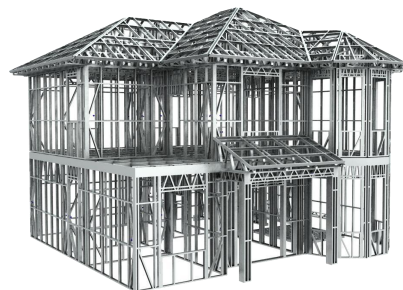
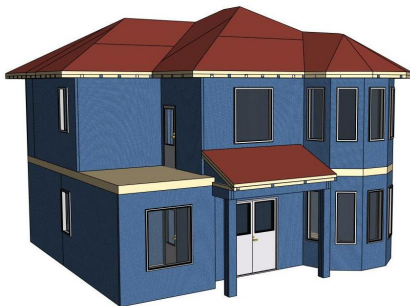
Jiangsu Huazhong Roll Forming Machine Co., Ltd  
Phone: 0086 13914110830  
Email: [huazhong@hz-lw.com](mailto:huazhong@hz-lw.com)  
[www.huazhong-lw.com](http://www.huazhong-lw.com)



### The design software of huazhong roll forming light gauge steel structure

Design software: the steel framing system use the world famous Architectural and Framing software. It is a full house design software, home building software, light commercial building software, and panel fabrication software, all packaged together. It combines the functionality of the Architectural and Framing software packages into one complete system. Custom home builders, production home builders, and commercial builders of all types and sizes uses this software when they need the ability to create full architectural and structural drawing sets. Manufactured, modular and panelized home builders also take advantages of the fabrication drawing features, and with the NC Link add-on module, export framing information directly to their manufacturing equipment.

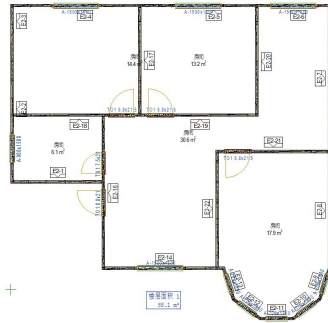
The software contains the functionality necessary for creating architectural, structural, and fabrication drawing sets. This includes all the features for creating walls, doors, windows, roof, ceilings, and floors in 2D layouts and 3D models, as well as, architectural trims, beams and columns, and other architectural components, plus all the framing layout features for walls, floors, ceilings, and roofs. It also includes 2D and 3D macros of furniture, appliances, cabinets, and many other accessories that will add a new level of details to your models.



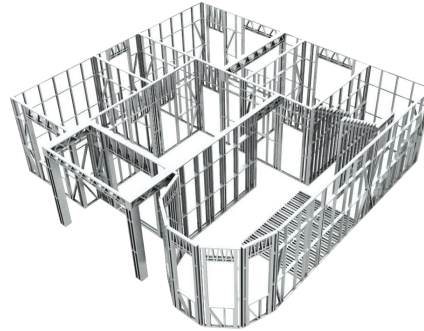


Jiangsu Huazhong Roll Forming Machine Co., Ltd  
Phone: 0086 13914110830  
Email: [huazhong@hz-lw.com](mailto:huazhong@hz-lw.com)  
[www.huazhong-lw.com](http://www.huazhong-lw.com)

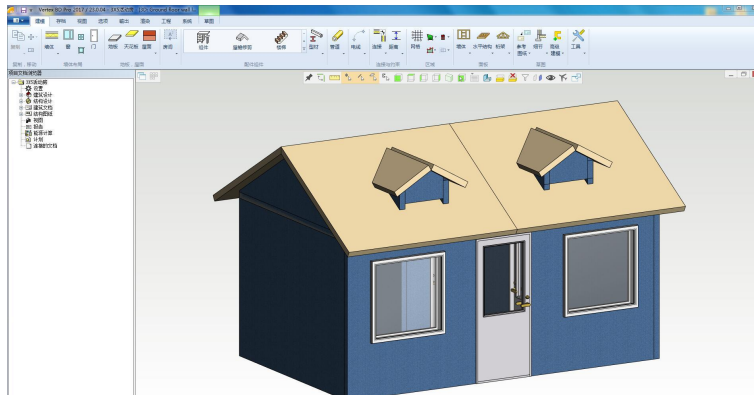
### Step 1:3D CAD Design



**3D  
Design**

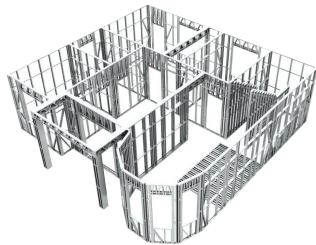


**Software(CAD)**

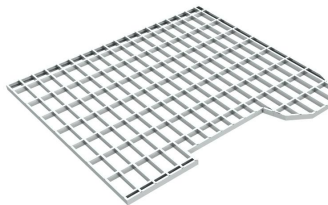


### Step 2:Detailing

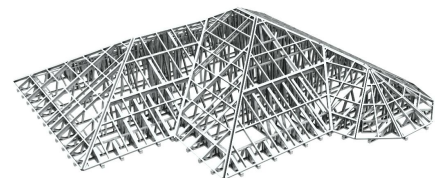
**Wall panel**



**Floor truss**



**Roof truss**

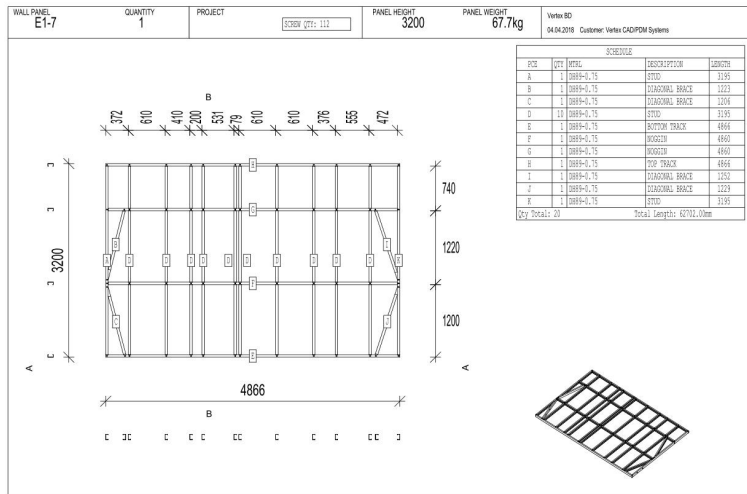


### Step 3:Generate CAM CNC file

[Http:www.huazhong-lw.com](http://www.huazhong-lw.com) E-mail:[huazhong@hz-lw.com](mailto:huazhong@hz-lw.com)  
Mobile:008613914110830/008613914119628



Jiangsu Huazhong Roll Forming Machine Co., Ltd  
 Phone: 0086 13914110830  
 Email: [huazhong@hz-lw.com](mailto:huazhong@hz-lw.com)  
[www.huazhong-lw.com](http://www.huazhong-lw.com)



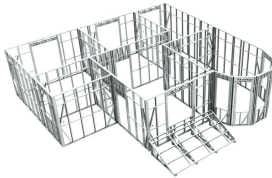
Step 4: Produce piece by piece

LGS/LSF Framer

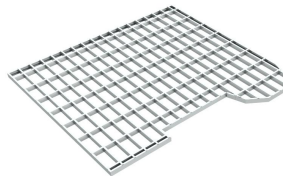


Step 5: Panel Assembly

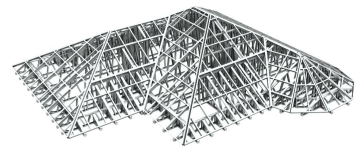
Wall panel



Floor truss



Roof truss



Step 6: Structure engineering



Jiangsu Huazhong Roll Forming Machine Co., Ltd  
Phone: 0086 13914110830  
Email: [huazhong@hz-lw.com](mailto:huazhong@hz-lw.com)  
[www.huazhong-lw.com](http://www.huazhong-lw.com)



Machine photo



#### Specification

Description: Single Web Size Profile(C+C&C+U)Framing System

Design soft integrated: Design Software with 3D Modeling, Detailing, Structure calculations

Machine control: Windows Base PC control & Full NC linked with Design Software

Profile Sizes Capable

C profile: A1-89(89\*41mm) or A1-100(100\*41mm) or A1-140(140\*41mm)

U profile: A1-89(92\*38mm) or A1-100(103\*38mm) or A1-140(143\*38mm)

Thickness range:0.8mm-1.2mm

Tooling punch: Service Hole, Web Notch, Lip cut, Truss, Dimple, Swage, Crimp, Shear

Max. Line speed: 1800M/hr(30M/min)

Main Driver Motor: 10HP(7.5kw) Servo Motor

Hydraulic Power: 7.5HP(5.5kw) with 3 Liters Accumulator and oil cooler

Printer: SOJET

Dimension: Length 5200mm\*Width 1200mm\*Height 1450mm

Machine Weight: about 3500kg

Uncoiler: 2000kgs, powered

**[Http:www.huazhong-lw.com](http://www.huazhong-lw.com)    [E-mail:huazhong@hz-lw.com](mailto:huazhong@hz-lw.com)  
**Mobile:008613914110830/008613914119628****